

WILDWOOD ESTATES

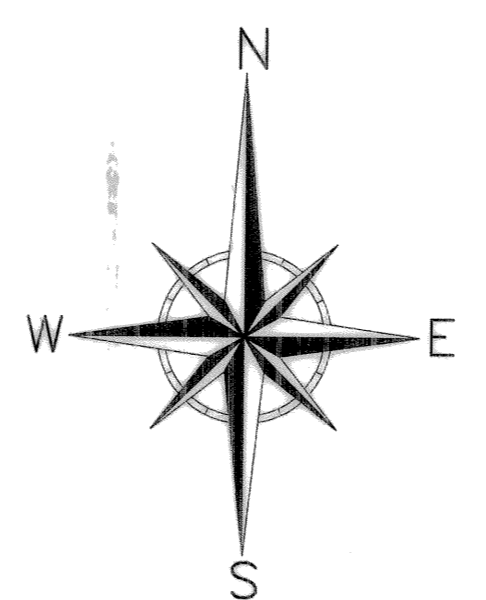
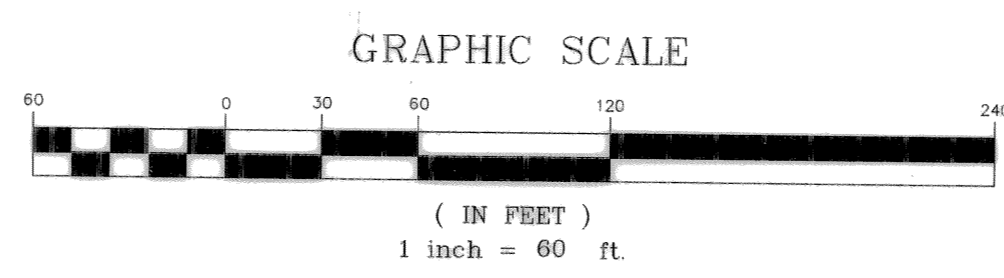
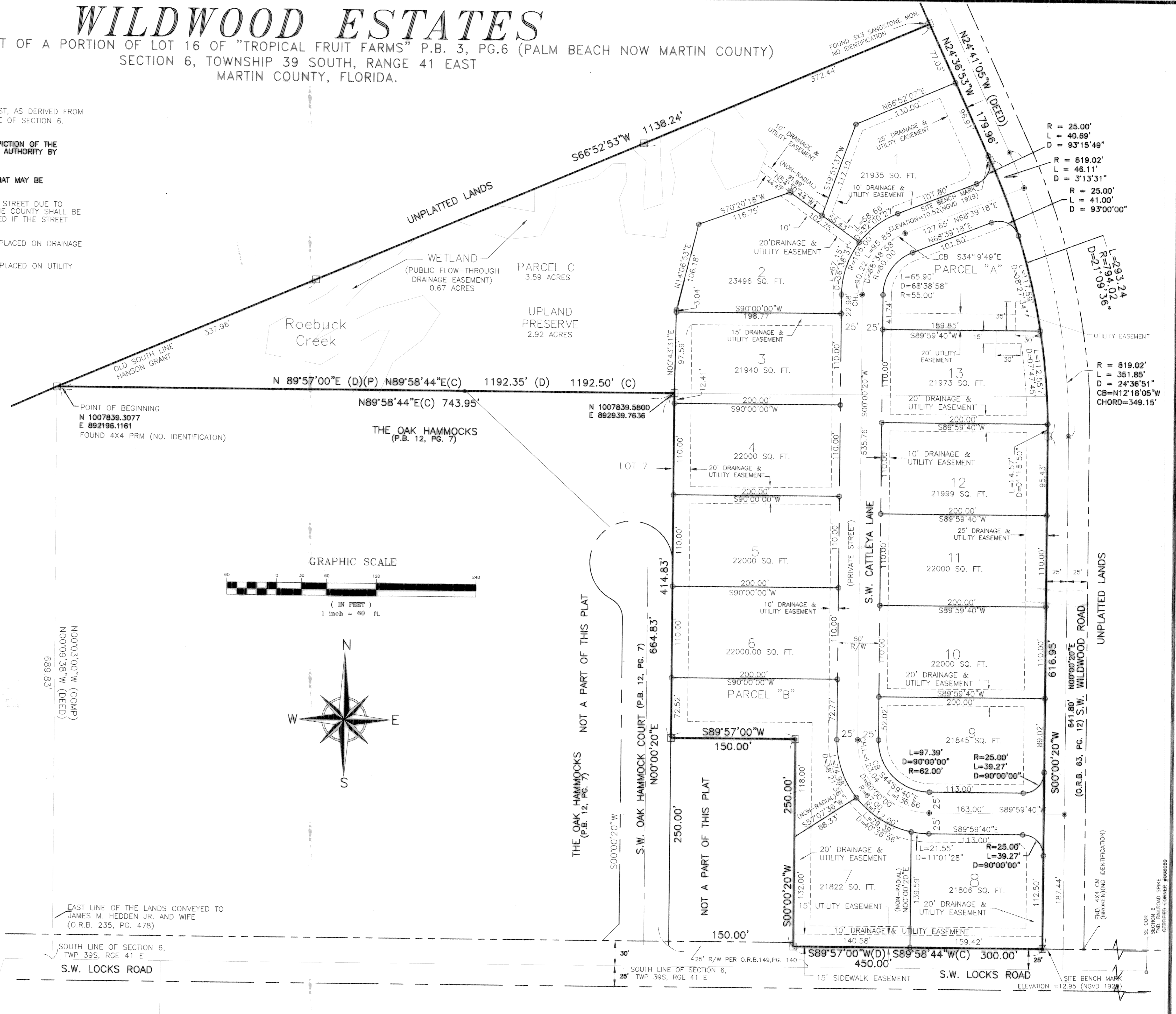
BEING A REPLAT OF A PORTION OF LOT 16 OF "TROPICAL FRUIT FARMS" P.B. 3, PG.6 (PALM BEACH NOW MARTIN COUNTY)
SECTION 6, TOWNSHIP 39 SOUTH, RANGE 41 EAST
MARTIN COUNTY, FLORIDA.

GENERAL NOTES

- A. BEARINGS AS SHOWN HEREON ARE BASED ON STATE PLANE COORDINATES, NAD 83/90, FLA. EAST, AS DERIVED FROM MARTIN COUNTY G.P.S. POINTS, REFERENCE A BEARING OF S89°57'00"W ALONG THE SOUTH LINE OF SECTION 6.
- B. THIS PLAT, AS RECORDED IN ITS ORIGINAL FORM IN THE PUBLIC RECORDS, IS THE OFFICIAL DEPICTION OF THE SUBDIVIDED LANDS DESCRIBED HEREON AND WILL IN NO CIRCUMSTANCES BE SUPPLEMENTED IN AUTHORITY BY ANY OTHER FORM OF THE PLAT, WHETHER GRAPHIC OR DIGITAL.
- C. NOTICE: THERE MAY BE ADDITIONAL RESTRICTIONS THAT ARE NOT RECORDED ON THIS PLAT THAT MAY BE FOUND IN THE PUBLIC RECORDS OF THIS COUNTY.
- D. IN THE EVENT THAT MARTIN COUNTY OR ANY PERSON(S) DISTURBS THE SURFACE OF A PRIVATE STREET DUE TO MAINTENANCE REPAIR OR REPLACEMENT OF A PUBLIC IMPROVEMENT LOCATED THEREIN, THEN THE COUNTY SHALL BE RESPONSIBLE FOR RESTORING THE STREET SURFACE TO THE EXTENT WHICH WOULD BE REQUIRED IF THE STREET WERE A PUBLIC STREET, IN ACCORDANCE WITH COUNTY SPECIFICATIONS.
- E. THERE SHALL BE NO BUILDING OR ANY OTHER KIND OF CONSTRUCTION OR TREES OR SHRUBS PLACED ON DRAINAGE EASEMENTS.
- F. THERE SHALL BE NO BUILDING OR ANY OTHER KIND OF CONSTRUCTION OR TREES OR SHRUBS PLACED ON UTILITY EASEMENTS.

LEGEND

- INDICATES NO. 5 IRON ROD AND CAP "BL LB 6852"
- INDICATES NAIL AND DISK "BL LB 6852" [PERMANENT CONTROL POINT(PCP)]
- INDICATES SET 4X4 CONCRETE MONUMENT WITH ALUMINUM DISK STAMPED "BETSY LINDSAY, INC. LB6852 PRM" [PERMANENT REFERENCE MONUMENT (PRM)]
- M.E. INDICATES MAINTENANCE EASEMENT
- D.E. INDICATES DRAINAGE EASEMENT
- R/W INDICATES RIGHT OF WAY
- CL INDICATES CENTER LINE
- O.R.B. INDICATES OFFICIAL RECORDS BOOK
- P.B. INDICATES PLAT BOOK
- PG. INDICATES PAGE
- TWP. INDICATES TOWNSHIP
- RGE. INDICATES RANGE
- (COMP) INDICATES COMPUTED
- R INDICATES RADIUS
- L INDICATES LENGTH OF ARC
- D INDICATES DELTA ANGLE
- N INDICATES NORTH
- E INDICATES EAST
- S INDICATES SOUTH
- W INDICATES WEST
- LB INDICATES LICENSED BUSINESS
- NAD INDICATES NORTH AMERICAN DATUM
- (C) INDICATES COMPUTED BASE ON FIELD MEASUREMENTS
- (D) INDICATES DEED
- CB INDICATES CHORD BEARING
- CH.L INDICATES CHORD LENGTH
- NGVD INDICATES NATIONAL GEODETIC VERTICAL DATUM OF 1929
- (P) INDICATES PLAT DIMENSION



B **BETSY LINDSAY, INC.**
SURVEYING AND MAPPING

208 NORTH U.S. HWY NO. 1 - UNIT 8 - TEQUESTA, FLORIDA 33469
(561)575-5275 (561)575-4324 FAX
LICENSED BUSINESS NO. 6852

WILDWOOD ESTATES SHEET 2 OF 2